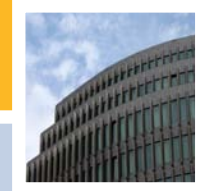
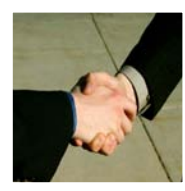
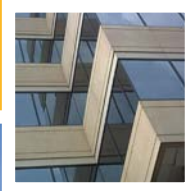


Gundaker Commercial Group

Fact Sheet



Gundaker Commercial Group (GCG) was founded as part of the Gordon A. Gundaker Real Estate Company. GCG was spun off and incorporated in December 1996 as a multi-disciplined commercial real estate company.

GCG is the parent company to 4 divisions:

- **Asset Management** – an asset and property management division with both commercial and multi-family portfolios
 - 2,200,000 +/- square feet of commercial assets managed, including office, retail, industrial and health/medical
 - 2,000+ multi-family apartment units
- **Gundaker Commercial - Brokerage** – a full-service commercial brokerage operation, servicing the St. Louis metro area
 - All disciplines represented – Office, Retail, Industrial, Investment, Multi-Family, Health/Medical, Religious and Land
- **Construction** – a full-service construction division with GC & CM capabilities. Services include General Contracting, Design/Build, Land Development, Tenant Improvement, Construction Consultation
- **Development** – a division designed to respond to the growing business development needs of GCG and its clients. Some current projects include:
 - Premier370 - St. Peter's, MO
 - Maple Valley Center – Farmington, Missouri
 - Hometown Commons - Mountain Home, Arkansas
 - Shoppes at Wingate - Shiloh, Illinois

Management team:

- Gordon A. Gundaker, Jr. – Chairman
- Michael J. Hejna – President / CEO
- Gregory A. Lee – Sr. Vice President – Asset Management
- Michael A. Seidel – Sr. Vice President – Construction
- Dean S. Burns – Sr. Vice President – Development
- Mary E. Mercurio – Sr. Vice President – Finance / CFO



100 Chesterfield Business Parkway
Ste 300 • Chesterfield, MO 63005
636-728-5100
www.gundakercommercial.com