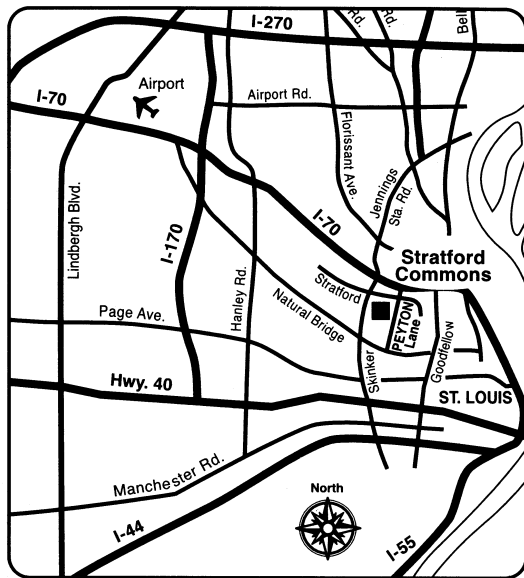


Stratford

COMMONS

Welcome to Stratford Commons Apartments, a townhome and garden style community with numerous amenities for you and your family. Conveniently located with access to Interstate 70. Stratford Commons offers our residents beautiful homes and a variety of resources with a great location. Our friendly on-site management team will make you feel right at home.



COMMUNITY AMENITIES:

- TOT LOT
- TECHNOLOGY ROOM
- ON SITE LAUNDRY
- COMMUNITY ROOM
- HEADSTART FACILITY ON SITE
- I-70 ACCESS

Stratford

COMMONS

Welcome!

4201 PEYTON LANE
ST. LOUIS, MISSOURI 63120

314-389-2274
FAX: 314-389-2896



E-mail: stratfordcommons@gundakercommercial.com
Missouri Relay Service TT/TTY Call 1-800-735-2966

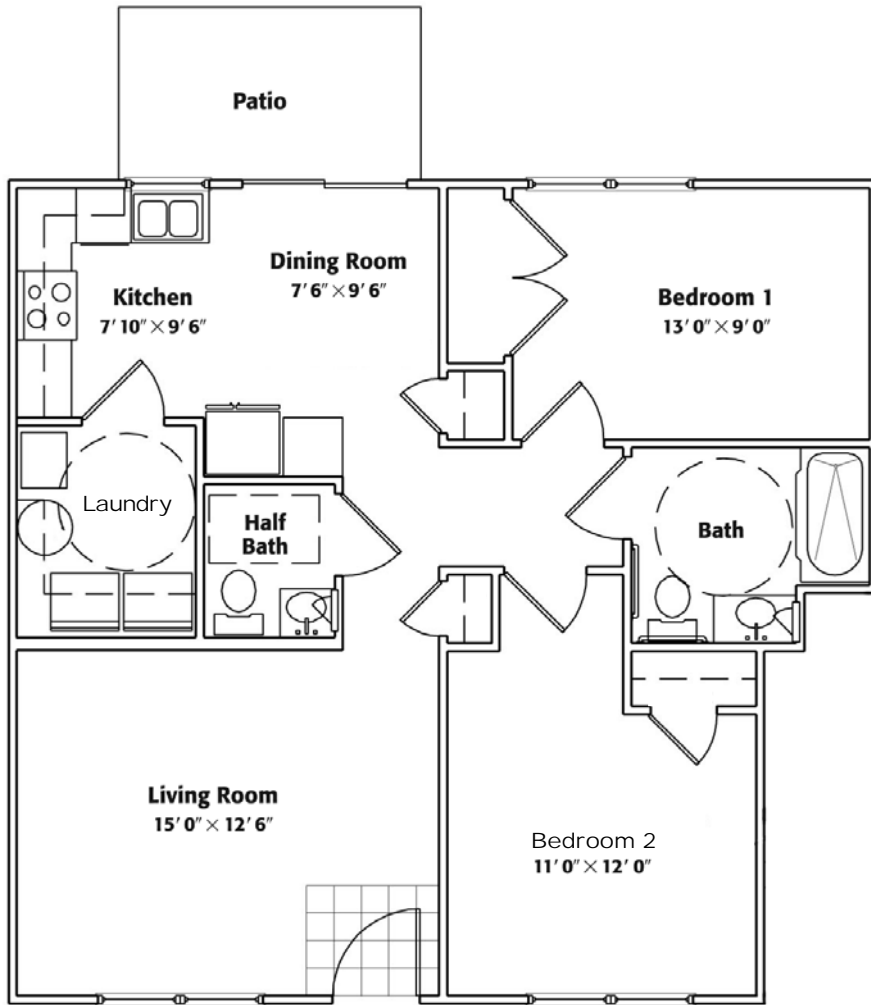
Thank you for visiting our community

Stratford

COMMONS

TWO BEDROOM APARTMENT

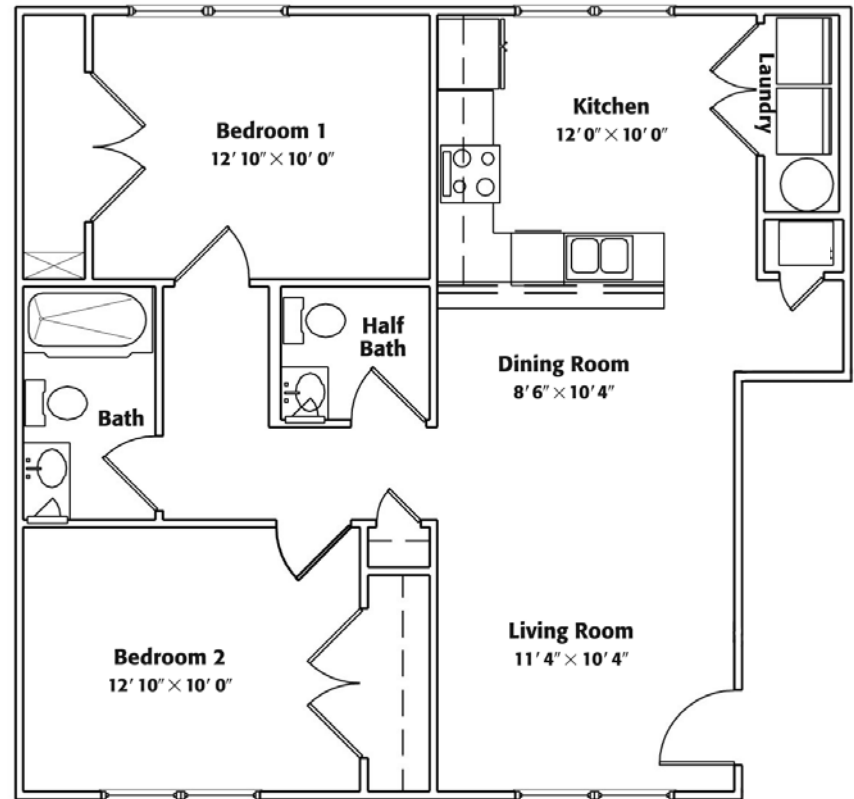
Approximately 920 Square Ft.



First Floor-Accessible

FEATURES:

- Appliances: Frost-Free Refrigerator, Stove, Dishwasher, Microwave
- Oak Cabinetry
- Blinds
- Spacious Closets
- Carpet and Vinyl Flooring
- Washer and Electric Dryer Hook-Ups



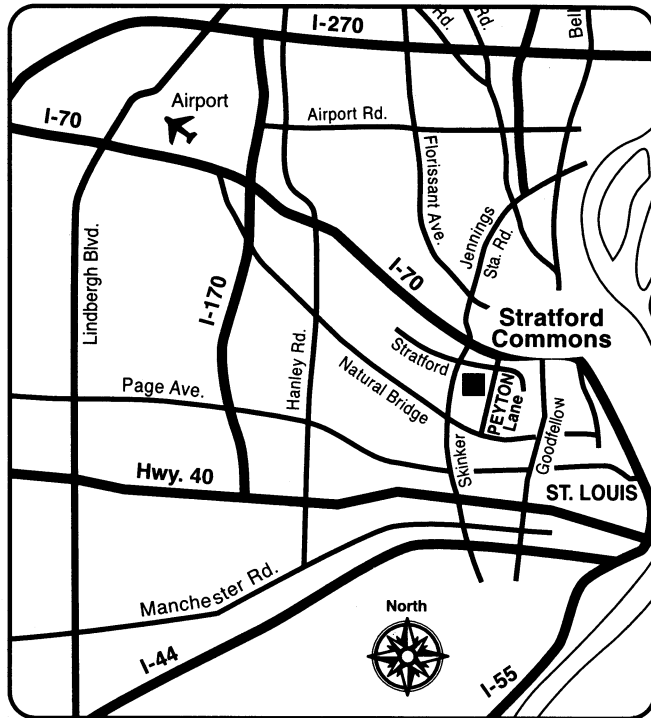
Second Floor-Garden Style

RENT: _____ DEPOSIT: _____

AGENT NAME: _____

Stratford

COMMONS



COMMUNITY AMENITIES:

- TOT LOT
- TECHNOLOGY ROOM
- ON SITE LAUNDRY
- COMMUNITY ROOM
- HEADSTART FACILITY ON SITE
- I-70 ACCESS

4201 PEYTON LANE
ST. LOUIS, MISSOURI 63120

314-389-2274

FAX: 314-389-2896

E-mail: stratfordcommons@gundakercommercial.com
Missouri Relay Service TT/TTY Call 1-800-735-2966



Thank you for visiting our community

Stratford

COMMONS

Welcome!

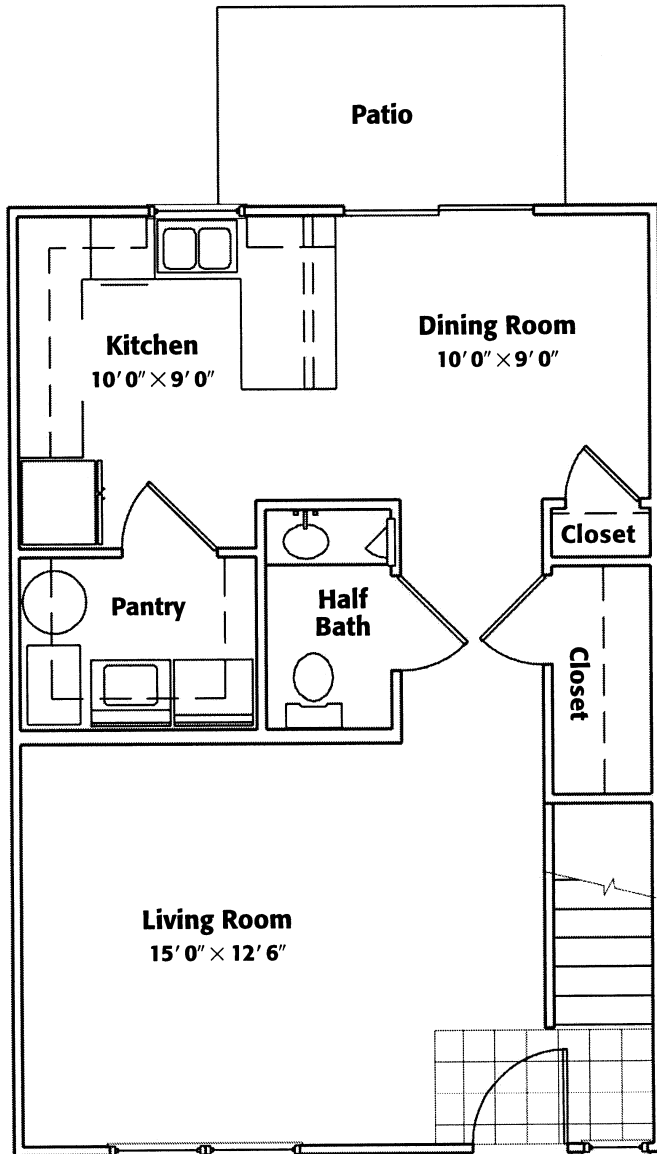
4201 PEYTON LANE
ST. LOUIS, MISSOURI 63120
314-389-2274

Stratford

COMMONS

THREE BEDROOM TOWNHOME

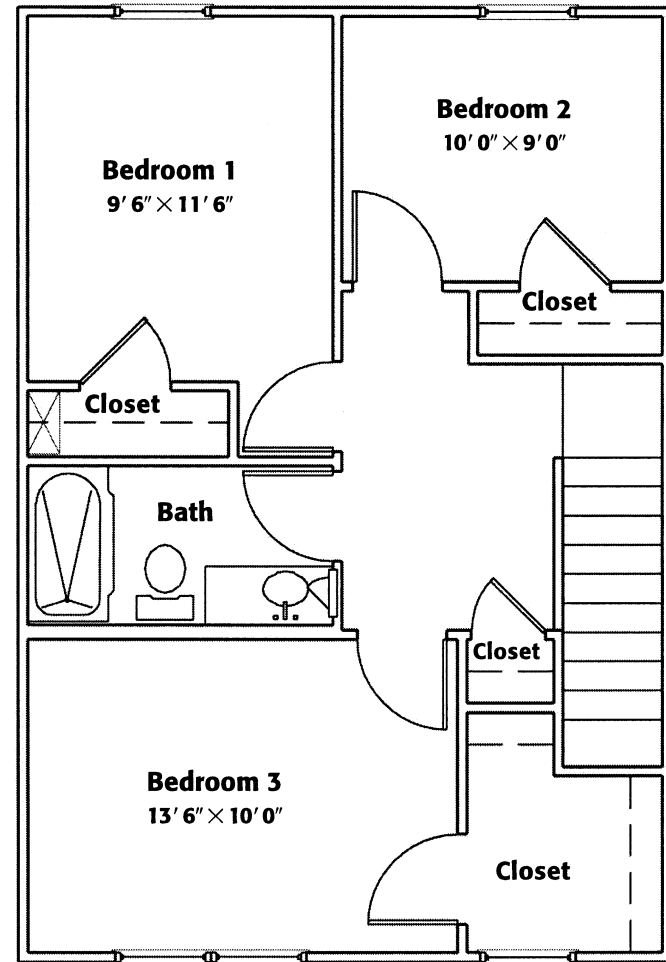
Approximately 1194 Square Ft.



First Floor

FEATURES:

- Appliances: Frost-Free Refrigerator, Stove, Dishwasher, Microwave
- Oak Cabinetry
- Blinds
- Spacious Closets
- Carpet and Vinyl Flooring
- Washer and Electric Dryer Hook-Ups



Second Floor

RENT: _____ DEPOSIT: _____

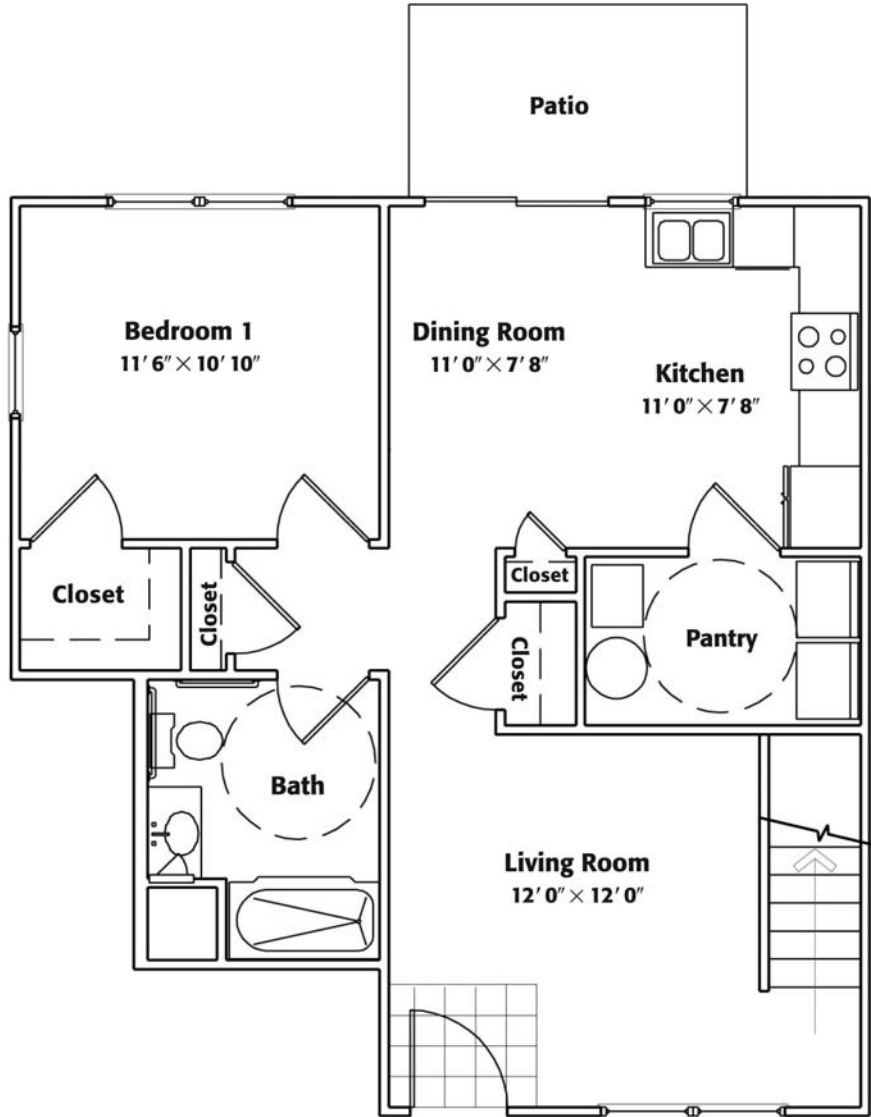
AGENT NAME: _____

Stratford

COMMONS

THREE BEDROOM ACCESSIBLE TOWNHOME

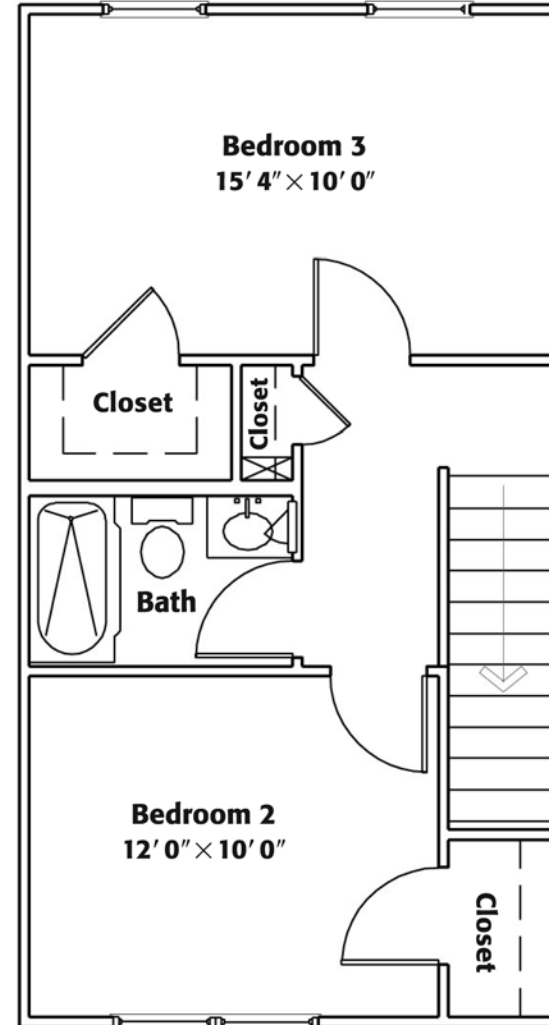
Approximately 1194 Square Ft.



First Floor

FEATURES:

- Appliances: Frost-Free Refrigerator, Stove, Dishwasher, Microwave
- Oak Cabinetry
- Blinds
- Spacious Closets
- Carpet and Vinyl Flooring
- Washer and Electric Dryer Hook-Ups



Second Floor

RENT: _____ DEPOSIT: _____

AGENT NAME: _____

THREE BEDROOM ACCESSIBLE TOWNHOME

Stratford

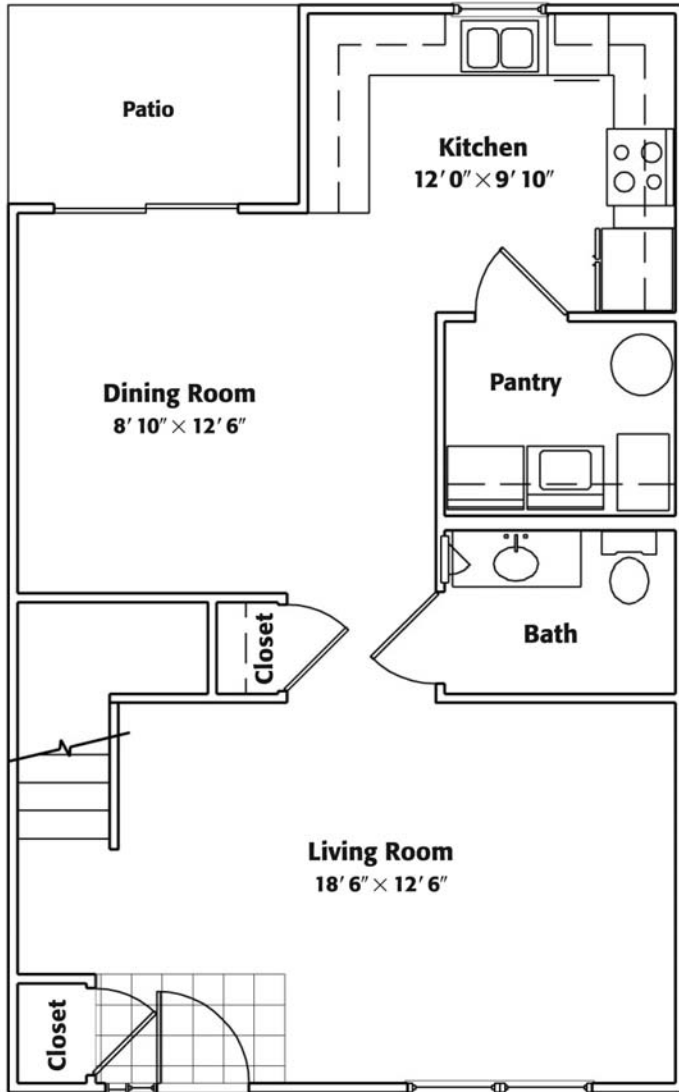
COMMONS

FOUR BEDROOM TOWNHOME

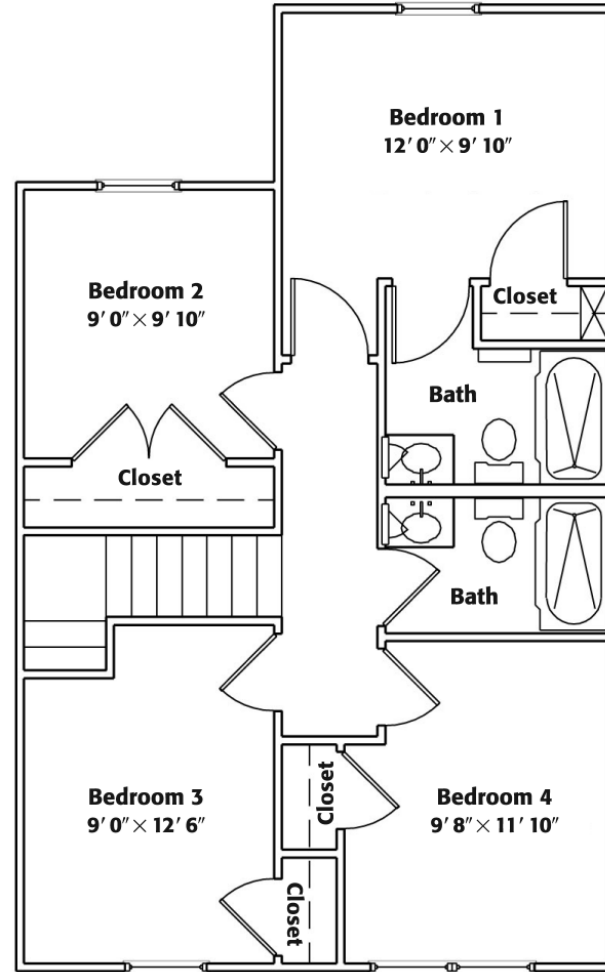
Approximately 1402 Square Ft.

FEATURES:

- Appliances: Frost-Free Refrigerator, Stove, Dishwasher, Microwave
- Oak Cabinetry
- Blinds
- Spacious Closets
- Carpet and Vinyl Flooring
- Washer and Electric Dryer Hook-Ups



First Floor



Second Floor

RENT: _____ DEPOSIT: _____

AGENT NAME: _____

Stratford

COMMONS



COMMUNITY AMENITIES:

- TOT LOT
- TECHNOLOGY ROOM
- ON SITE LAUNDRY
- COMMUNITY ROOM
- HEADSTART FACILITY ON SITE
- I-70 ACCESS

4201 PEYTON LANE
ST. LOUIS, MISSOURI 63120

314-389-2274

FAX: 314-389-2896

E-mail: stratfordcommons@gundakercommercial.com
Missouri Relay Service TT/TTY Call 1-800-735-2966



Thank you for visiting our community

Stratford

COMMONS

Welcome!

4201 PEYTON LANE

ST. LOUIS, MISSOURI 63120

314-389-2274