

Colonial Apartments

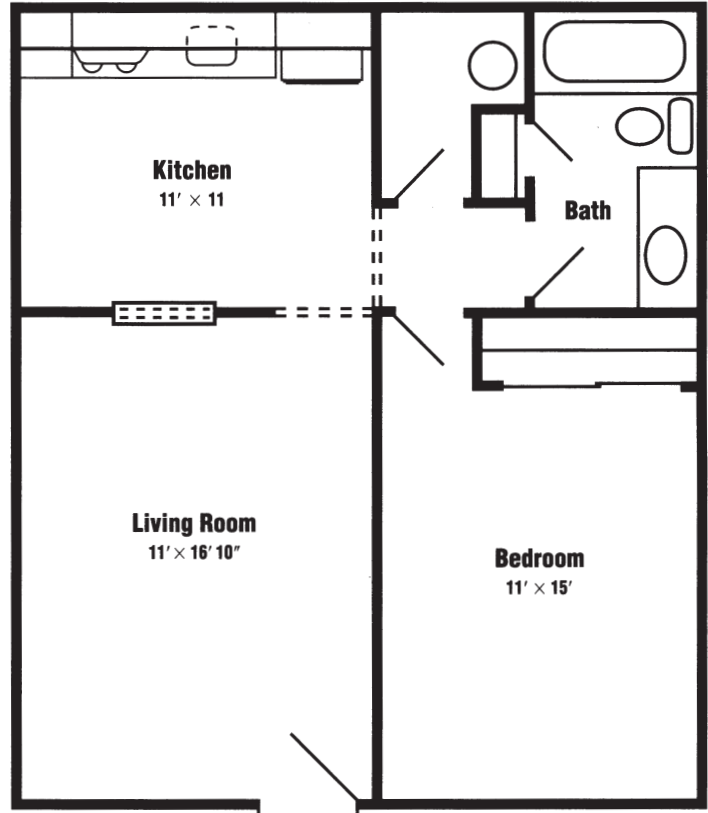


Quiet, comfortable, affordable living. Colonial Apartments is a place to call home. Our friendly community of newly renovated units has easy access to major highways (I-70, I-170, I-270) and major employers, such as Lambert International Airport. You will find easy access to Northwest Plaza, Christian Hospitals and minutes to downtown St. Louis or downtown St. Charles. Come by today and let our professional, courteous staff welcome you home.

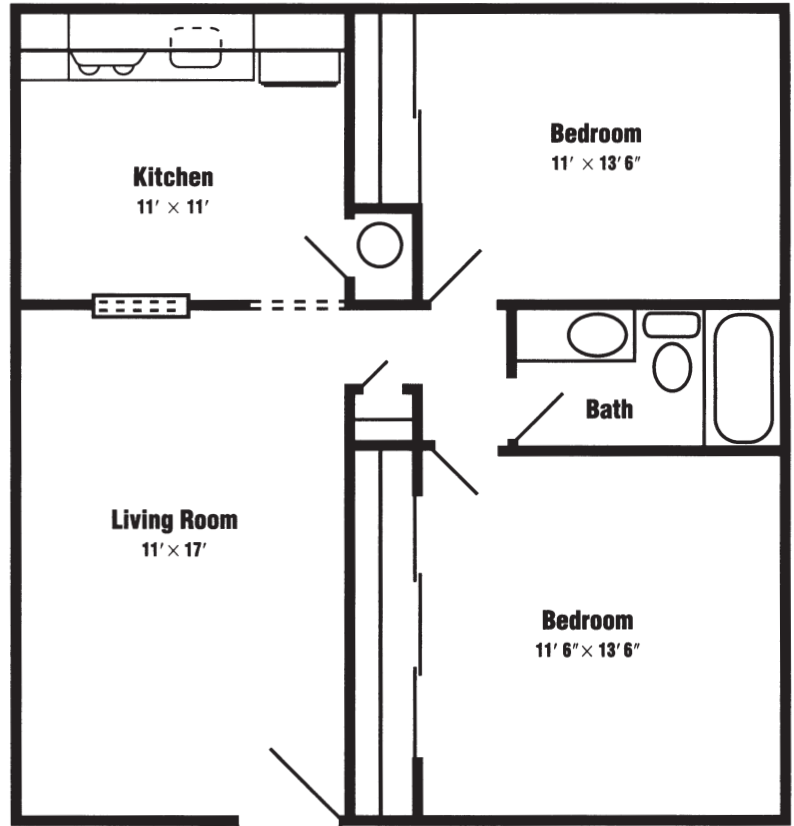
Features include:

- Central Air & Heat
- Frost-Free Refrigerator
- Mini-Blinds
- Electric Range
- Dishwasher
- Wall-to-Wall Carpet
- Private Parking
- Vinyl Kitchen/Bath Flooring
- Ceiling Fan

ONE BEDROOM *Approximately 520 Square Ft.*



TWO BEDROOM *Approximately 645 Square Ft.*



One Bedroom Floor Plan:

Rent _____

Deposit _____

Two Bedroom Floor Plan:

Rent _____

Deposit _____

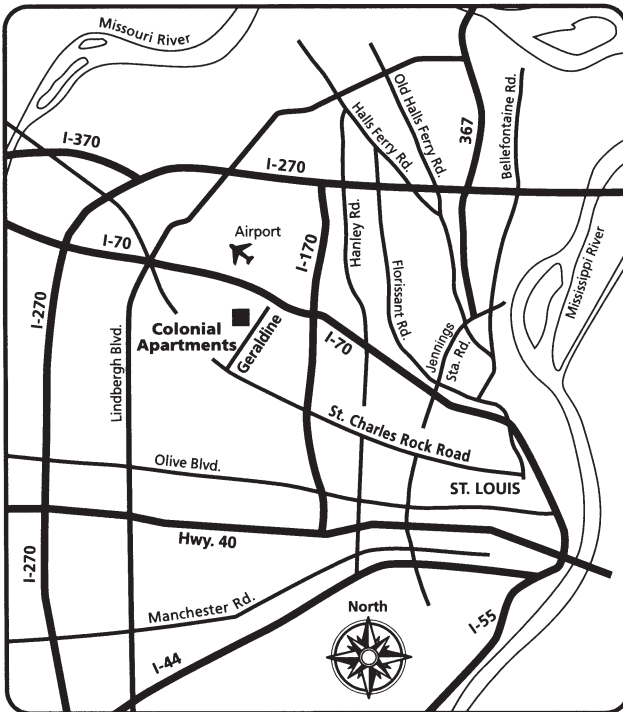
Agent Name _____

4127 Geraldine #3
St. Ann, MO 63074
(314) 426-6422
 Fax: (314) 426-1342

Welcome!



Colonial Apartments



Directions: St. Charles Rock Road, two (2) miles east of Lindbergh, to Geraldine. North on Geraldine five (5) blocks, look for us on the left.

4127 GERALDINE # 3
ST. ANN, MO 63074
(314) 426 - 6422
FAX: (314) 426-1342

E-MAIL:
colonialapartments@gundakercommercial.com



GUNDAKER
COMMERCIAL GROUP

